

# Getting Started with the OmniKey Card Reader

Congratulations! You've taken the plunge and purchased the OmniKey Card Reader. These instructions will guide you through installing the LogCard Utility and the proper drivers to get you off to a successful start using your OmniKey Card Reader.

There are four sections to getting started:

**Section I** Installing the LogCard Utility and Card Reader Drivers.

**Section II** Ensuring your computer is using the proper driver for the card reader. (Windows users only; not required for Mac.)

**Section III** Launching the LogCard Utility and trying it out!

**Section IV** Troubleshooting

**Note:** Use of the card reader and LogCard Utility requires a formatted LogCard. If you have not already done so, insert your LogCard into a PM3 or PM4 and let the Performance Monitor format the card.

## Section I: Installing the LogCard Utility and Card Reader Drivers

To ensure you are running the most current version of the utility, we recommend downloading the LogCard Utility from the Web. Refer to the bottom of this page for instructions.

If you prefer, you can install the LogCard Utility from the CD you received with your card reader (refer to the CD installation instructions for your operating system; these instructions begin on page 2).

**Note:** If you are a Windows user, your CD contains the following:

- The LogCard Utility
- A trial version of RowPro, made by Digital Rowing ([digitalrowing.com](http://digitalrowing.com))
- The Concept2 Logbook (a subset of RowPro)

For more information about RowPro or the Concept2 Logbook, please visit [digitalrowing.com](http://digitalrowing.com).

### Procedure: Installing from the Web (recommended)—Windows and Mac

To ensure you are installing the most current version of the LogCard Utility, or if you do not have the CD, follow these instructions.

1. Go to [concept2.com/utility](http://concept2.com/utility)
2. Click **Downloads**.
3. Click the **Save** or **Run** button for the file type appropriate for your connection speed and operating system:
  - .exe for Windows users with high-speed internet connections
  - .zip for Windows users with slower internet connections
  - .dmg for Mac users
4. When prompted, save the selected file to your computer.
5. **Windows users:**
  - When the file download is complete, access the downloaded file and double-click it to run the LogCard Utility installation (if you downloaded the .zip file, you will need to open the compressed .zip file to access the .exe).
  - Follow steps 2 through 8 under Installing from the CD—Windows section.

#### Mac users:

- Navigate to the .dmg file and double-click it to begin the installation.
- Follow steps 3 through 8 under Installing from the CD—Mac section.

Procedure: Installing from the CD–Windows

**Note:** These instructions describe the installation process for Windows XP and Windows Vista. If you are running a different operating system, the installation process may differ.

1. Place the CD in your computer’s CD or DVD drive.

**Windows XP:** The CD should automatically start-up and display the PC Software for your PM window. See photo A. If the CD does not start automatically:

- a. Click the Start menu on your PC, and then click **Run**.
- b. Browse to your CD/DVD drive and double-click **Concept2 Software**.
- c. Double-click **CD\_Start.exe**.
- d. On the Run window, click **OK**.

**Windows Vista:**

- a. On the Auto Play window, click **Run CD\_start.exe**. See photo B.

**Note:** Throughout the LogCard Utility installation on Windows Vista, the User Account Control utility may prompt you for permission to install the software and necessary drivers. To ensure proper installation, click **Allow** or **Continue** as necessary to allow the installation.



photo A



photo B


2. Click the C2 Logo button  to begin installing the LogCard Utility.
3. On the InstallShield Wizard Welcome window, click **Next** (it may take several minutes for this window to appear).
4. Accept the End-User License Agreement and click **Next**.
5. (Optional) Enter your Customer Information and click **Next**.
6. Accept the default Destination Folder (recommended) or select a new Destination Folder and click **Next**.
7. On the Ready to Install the Program window, click **Install**. The installation will take several seconds. Upon completion, the InstallShield Wizard Completed window will be displayed. Click **Finish**. See photo C. (If the Launch the program and Show the readme file checkboxes are selected, the readme file and LogCard Utility will automatically launch.)



photo C

8. Proceed to Section II.

## Procedure: Installing from the CD-Mac

1. Insert the CD into your computer. The CD will start up and display the Concept2 Software window. (You may need to double-click the CD to view its contents.) See photo A.



photo A

2. Double-click the .dmg.

3. Double-click the LogCard Utility.pkg contained in the window. The Install LogCard Utility window is displayed. See photo B.



photo B

4. Click **Continue** until the End User Agreement window is displayed. See photo C.



photo C

5. Click **Continue**, and then click **Agree**.

6. Select the location on your computer where you would like to install the software, and then click **Continue**. See photo D.



photo D

7. On the Easy Install window, click **Install**. See photo E. The installation begins and takes a few seconds. When it is finished, the Successful Installation window is displayed. See photo F.

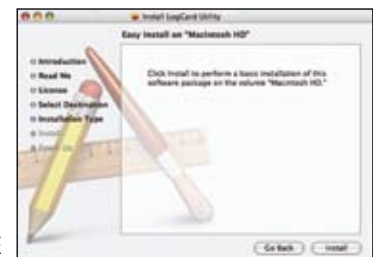


photo E

8. Click **Close**. Depending on your operating system, you may need to reboot your computer prior to using the LogCard Utility.



photo F

## Section II: Ensuring your Computer is using the Proper Driver —Windows only (not required for Mac)

### Procedure:

The first time you plug your card reader into your computer, you may need to tell your computer which driver to use. **Note:** If the Windows Found New Hardware Wizard does not launch when you first plug in your card reader, proceed to Section III.

#### Windows XP Internet Method (Recommended)

1. Establish an Internet connection. If you do not have access to the Internet or prefer not to install drivers using this method, proceed to the Windows XP CD Method section below.
2. Connect your card reader to your computer. The Windows Found New Hardware Wizard may launch and give you the option of connecting to Windows Update. Select **Yes, this time only** and then click **Next**. See photo A.
3. At the next prompt, select **Install the software automatically (Recommended)** and click **Next**. The Wizard searches the Internet for the correct driver and installs it on your machine.
4. When the Wizard notifies you of successful installation, exit the Wizard and proceed to Section III.

#### Windows XP CD Method

1. Navigate to the Drivers folder on the Concept2 Software CD.  
**Note:** You may have to right-click the name of the CD and click **Open** to view the contents of the CD.
2. Double-click the appropriate driver for the operating system you have (see list below) and follow the prompts to install the drivers. By default, the driver will be installed in C:\Omnikey\CardMan3x21... (the folder name in C:\Omnikey will resemble the name of the driver you installed).
  - For Windows Vista XP, 2000, and 2003, select CardMan3x21\_V1\_1\_2\_4.exe
  - For Windows XP/64 (AMD), select CardMan3x21\_V1\_1\_2\_4\_W64\_AMD.exe
  - For Windows XP/Itanium, select CardMan3x21\_V1\_1\_1\_0\_W64\_IA.exe

**Note:** If you need drivers for operating systems other than those listed here, visit [omnikey.aitg.com](http://omnikey.aitg.com).

3. Connect your card reader to your computer. The Windows Found New Hardware Wizard may launch and give you the option of connecting to Windows Update. Select **No, not at this time** and then click **Next**. See photo B.
4. On the next window, select **Install from a list or specific location (Advanced)** and then click **Next**. See photo C.
5. The next window allows you to designate which driver to use. On this window:
  - a. Select **Search for the best driver in these locations**.
  - b. Deselect the **Search removable media (floppy, CD-ROM...)** checkbox if it is selected.
  - c. Check the **Include this location in the search** checkbox, and then click **Browse** to browse to the driver you installed on your computer in Step 2. See photo D.
  - d. Click **Next**.
  - e. When the driver installation is complete, click **Finish**.



photo A



photo B



photo C



photo D

## Section II: Ensuring your Computer is using the Proper Driver —Windows only (not required for Mac)

### Windows Vista Internet Method (Recommended)

1. Establish an Internet connection. If you do not have access to the Internet or prefer not to install drivers using this method, proceed to the Windows Vista CD Method section below.
2. Connect your card reader to your computer. The Window's Found New Hardware Wizard may launch and give you the option of installing driver software. Select **Locate and install driver** software. See photo E.
3. Click **Start** (the Windows icon in the lower left corner of the screen), then click **Computer**, and then click **Manage**. See photo F.
4. Double-click **Device Manager**. See photo G.
5. Click **+** next to Smart card readers to expand the list, right-click **USB Smart Card reader**, and then click **Update Driver Software**.
6. Select **Search automatically for updated driver software**. The Wizard searches the Internet for the correct driver and installs it on your machine.
7. When the driver installation is complete, click **Close** and proceed to Section III.

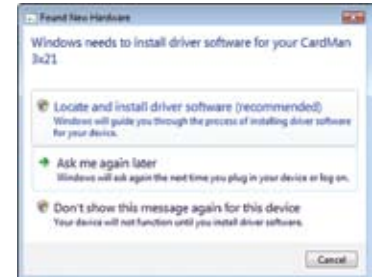


photo E



photo F

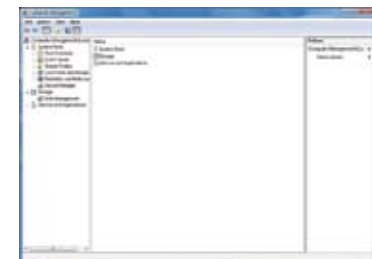


photo G

### Windows Vista CD Method

1. Navigate to the Drivers folder on the Concept2 Software CD.  
**Note:** You may have to right-click the name of the CD and click **Open** to view the contents of the CD.
2. Double-click the appropriate driver for the operating system you have (see list below) and follow the prompts to install the driver files. By default, the driver will be installed in C:\Omnikey\CardMan3x21... (the folder name in C:\Omnikey will resemble the name of the driver you installed):
  - For Windows Vista, select CardMan3x21\_V1\_1\_2\_4\_.exe
  - For Windows Vista x64, select CardMan3x21\_V1\_1\_4\_W64\_AMD
3. Connect your card reader to your computer. The Window's Found New Hardware Wizard may launch and give you the option of installing driver software. Select **Locate and install driver software**. See photo E.
4. Click **Start** (the Windows icon in the lower left corner of the screen), then right-click **Computer**, and then click **Manage**. See photo F.
5. Double-click **Device Manager**. See photo G.
6. Click **+** next to Smart card readers to expand the list, right-click **USB Smart Card reader**, and then click **Update Driver Software**.
7. Select **Browse my computer for driver software**.
8. Navigate to the driver you installed on your computer in Step 2, click **OK**, and then click **Next**.
9. When the driver installation is complete, exit the Wizard and proceed to Section III.

### Procedure

Congratulations! You're ready to start using the LogCard Utility with your LogCard. This procedure ensures the LogCard Utility can detect your card reader.

1. Launch the LogCard Utility.

**Windows users:** Go to **Start > All Programs > Concept2 > LogCard Utility**. The Main Menu will be displayed. See photo A.

photo A



**Mac users:** Go to **Applications > LogCard Utility** and double-click **LogCard Utility**. The Main Menu will be displayed. See photo B.

2. If it isn't already connected, connect your card reader to your computer.

**Windows users:** Plug your card reader into the same port you used in Section II. (Plugging it into a different port may cause the New Hardware Wizard to launch. If it does, complete Section II, or unplug the card reader and replug it into the port you used in Section II and cancel the Wizard.)

photo B



3. After a few seconds, the LogCard Utility should register the card reader, and a card reader icon will appear in the lower left corner of the LogCard Utility. A LogCard icon will also appear to the right of the card reader icon and will have a red X through it to indicate that no LogCard is present. See photo C.

photo C



4. Insert a formatted LogCard into the card reader. After a few seconds, the LogCard Utility should register the LogCard, and the red X on the LogCard icon next to the card reader icon should clear. Refer to photos D and E.

You can now begin using the utility to manage the data on your LogCard. For instructions on using the various LogCard Utility options, click the help icon (i) in the lower right corner of the Main Menu window to launch the LogCard Utility Help file.

photo D



**Windows users:** If you cannot get the red X on the LogCard icon to clear, refer to the Troubleshooting section.

photo E



## Section IV: Troubleshooting—Windows

Symptom: You've installed the LogCard Utility and connected your card reader to your computer. The LogCard Utility indicates that the card reader is connected. You insert a formatted LogCard into the card reader, but the LogCard Utility continues displaying a red X over the LogCard icon next to the card reader icon. See photo A.

Cause: Newer Windows-based computer systems have a default driver for external card readers. In some cases, the operating system uses this driver instead of the OmniKey driver. Proper operation of the card reader requires use of the OmniKey Card Reader driver.

Remedy:

1. If it is open, close the LogCard Utility.
2. If you are using Windows Vista, proceed to page 5 and follow the instructions for obtaining the driver using the Internet method (recommended) or the CD method. Once you've completed the procedure, retry using your card reader and LogCard with the LogCard Utility. If the problem persists, contact Concept2.

If you are using Windows XP:

- a. Connect your card reader to your computer if it isn't already connected. Plug it into the same port you have been using.
  - b. On your computer, right-click the My Computer icon.
  - c. Click **Properties**.
  - d. On the System Properties window, click the **Hardware** tab. See photo B.
  - e. Click the **Device Manager** button.
  - f. On the Device Manager window, click the + icon next to Smart card readers to expand the list. See photo C. ("Smart card readers" appears in the list only if your card reader is plugged into your computer, so ensure it's plugged in.)
  - g. Right-click **USB Smart Card reader**, and then click **Update Driver**. See photo D.
  - h. Proceed to Step 3.
3. Follow the steps below appropriate for your operating system and method of obtaining the driver:
    - a. XP, Internet method: Establish an Internet connection, then go to the Windows XP Internet Method on page 4 and follow steps 2-4. In step 2, start with "Select **Yes, this time only.**"
    - b. XP, CD method: Go to the Windows XP CD Method on page 4, and perform steps 1-5e. In step 3, start with "Select **No, not at this time.**" See photo E.
  4. Relaunch the LogCard Utility and insert your LogCard in your card reader. The LogCard Utility should register it, and you can begin transferring data. If the problem persists, please contact Concept2.



photo A



photo B

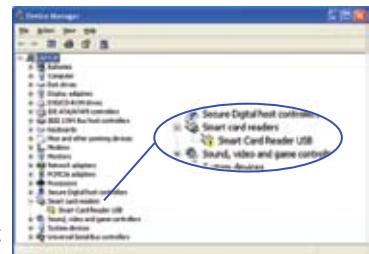


photo C

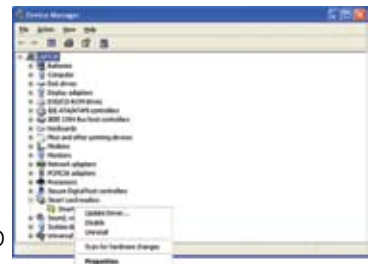


photo D



photo E

Contact Information:

U.S./Canada: rowing@concept2.com, 800.245.5676

International: Please contact your authorized Concept2 dealer.